

VIP™ Softphone SE

Use your ESI Communications Server from just about anywhere

Have you ever wanted to take your office phone and its features with you? Now you can. **VIP Softphone SE** (Standalone Edition¹) from ESI lets you take the advanced capabilities of your ESI Communications Server² wherever you go, particularly when you're on the road. You'll be delighted by the advantages **VIP Softphone SE** has to offer.

Like other members of ESI's **VIP** family of optional **Windows®**-based software applications, **VIP Softphone SE** combines the power of your ESI business communications system and your PC. But that's just the start.

It's an ESI phone. On your PC screen.

With **VIP Softphone SE** installed on your PC, just plug in a USB headset. Now, right there on your screen, you've got the combined capabilities of an ESI IP Feature Phone II and **VIP Professional SE**. The Virtual Button Window provides single-click, color-coded access to 30 extensions, voice mailboxes, departments, and speed-dial numbers. To dial any other number, simply type it in.

If you're a "road warrior," **VIP Softphone SE** connects you right back to the ESI Communications Server. Have a question for a co-worker? Just dial an extension. Make and take other calls, including conference calls. Check voice mail and leave messages for others. Record important phone conversations. In short: you can perform nearly every task just as if using an ESI IP Feature Phone II in the office.



VIP Softphone SE

File View Commands Tools Help

Call Display

9/17 2:46 PM
NEW 3 OLD 2

esi

Speaker [Volume Control]
Mic [Volume Control]

Answer Release Call Hold
Voice Mail Transfer Flash Exc Hold
Agt On/Off Redial Mute/DND Conference
Agt Wrap Call Fwd Caller ID Record
Ovr Page [] Qk Switch []

Quick Contact List

Name	Number	Classification
AA Roofing Co.	(555) 555-7436	Business
AMY H	102	Business
DAVE G	151	Home
GREG O	130	Business
John Doe	(555) 555-0192	Business
JONNA	171	Business
Kent Hansen	(555) 365-1568	Mobile
Kent Jeffries	(555) 805-0725	Mobile
MARK B	143	Business
Phillip Jones	(555) 555-3208	Home

Virtual Buttons

File	View	Help
PAUL S	JASON H	JOHN K
JOHN R	JASON L	BEVERLY
MARK B	AMY	PAMELA
DICK M	JONNA	JIM L
MELISSA	CREDIT	AJ
SARAH	ACCT RECV	NANCY A
NANCY M	SHIPPING	PAUL C
BRENDA	RECEIVING	MATT P
DAVE G	AARON	HOME



It's more than "just" a softphone, too.

Because ESI's *VIP Softphone SE* shares capabilities with *VIP Professional SE*, it's more than a softphone. Here are some of the other communication capabilities it gives you:

- Powerful speed-dialing from multiple lists, including an always-updated list of system extensions.
- Voice mail management and prioritization, which you'll really appreciate since *VIP Softphone SE* lets you use your ESI voice mail almost anywhere right from your PC.
- Enhanced contact management.
- Complete and detailed call records — made simple.
- Private and secure intra-system text-messaging³ for whenever you must communicate with a co-worker but a phone call is impossible or impractical.
- Simple drag-and-drop programming, from drop-down menus.
- Auto-recording⁴ of incoming calls.

And, like other *VIP* applications, *VIP Softphone SE* is easy to implement. It connects non-invasively to the existing network.

Softphone. Hard to beat.

VIP Softphone SE puts on your PC screen the power of an ESI IP Feature Phone II and the fully featured *VIP Professional SE* application — an exceptional combination. So, whether you're in the office or on the road . . .

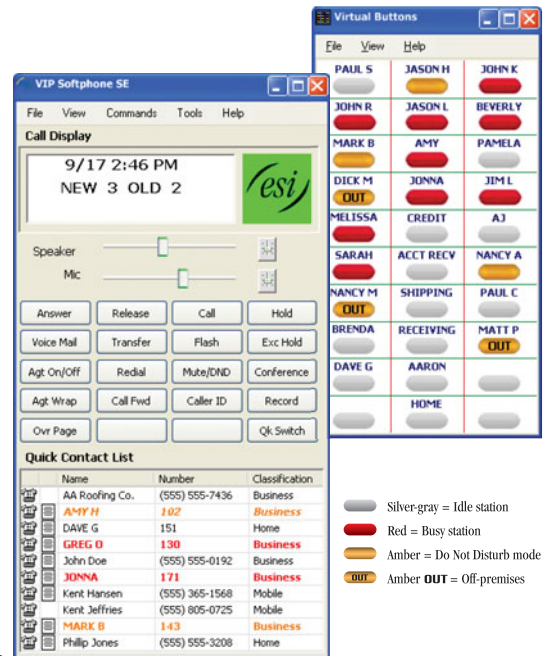
VIP Softphone SE lets you use your ESI Communications Server from just about anywhere.

To learn more about *VIP Softphone SE*, consult your Certified ESI Reseller or visit www.esicomservers.com/Softphone.

*VIP Softphone SE*¹ works with ESI Communications Servers². Requires appropriate licensing (local or remote), as well as broadband connection and USB headset (visit www.esicomservers.com/Softphone for an up-to-date list of ESI-tested headset models). For additional details about *VIP SE* and *VIP Professional SE*, consult the *VIP SE brochure* (ESI document 0450-1282) or visit www.esicomservers.com/VIP.

1. ESI also makes a form of *VIP Softphone* that is Outlook-integrated, rather than a standalone application. To learn more, consult your ESI Reseller or visit www.esicomservers.com/Softphone. 2. To support certain ESI Communications Server features, the entry-level ESI-50L Communications Server must be upgraded to an ESI-50 Communications Server; for more details about this, please consult your Certified ESI Reseller. 3. Text messaging is available between any two users of the standalone and Outlook-integrated versions of *VIP Softphone*, *VIP PC Attendant Console*, *VIP Professional*, or *VIP ACD* (Supervisor or Agent) on the same local area network. 4. Appropriate licensing required. 5. Off-premises indication requires optional ESI Presence Management. For details concerning this product, consult its brochure (ESI document 0450-0812) or visit www.esicomservers.com/presence. 6. Any 64-bit version of Windows is incompatible with any *VIP* software, including *VIP Softphone SE*. For additional information concerning software requirements and compatibility, consult the *VIP SE* brochure (ESI document 0450-1282) or visit www.esicomservers.com/VIP.

Copyright © 2009 ESI (Estech Systems, Inc.). *VIP* is a trademark of ESI. Other registered trade names mentioned herein are trademarks of their respective owners. ESI phone systems are protected by various U.S. Patents, granted and pending. Product details and features described herein are subject to change without notice. Some features may not be available at initial release. Visit ESI at www.esicomservers.com.



*VIP Softphone SE's color-coded buttons and text indications quickly show you live station status⁵ for each system extension or department programmed into the **Quick Contact List** and the **Virtual Button Window**. And the **Esi-Check box** in the **Call Display** constantly displays the quality of your PC's connection to your office's ESI Communications Server. Here, it's "green" for "good."*